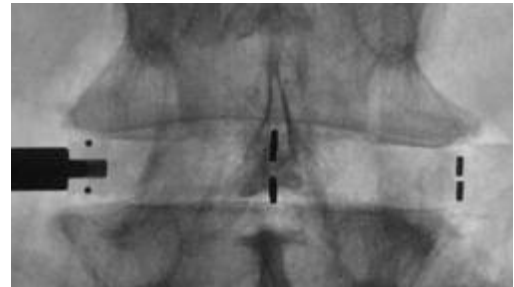
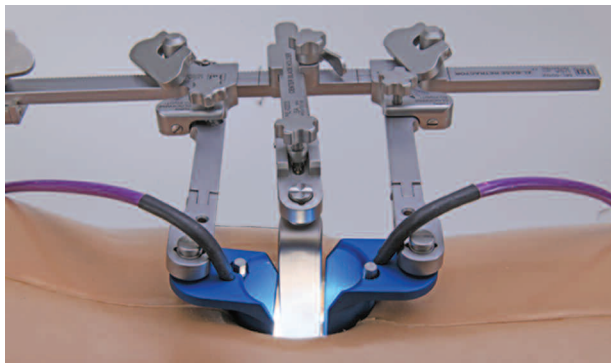


### ShurFit™ MALIF™ Retractor Options

- 2,3 or 4 blade retraction optimizes accessibility
- Blades dock firmly to vertebral bodies for added stability
- Integrated light source provides optimal visibility



**6 Tantalum Markers**  
Increases Visualization of Implant Position

#### SHURFIT MALIF IMPLANT SIZING

**Widths** 18 & 22mm  
**Lengths** 45, 50 & 55mm  
**Heights** 8, 10, 12 & 14mm  
**Lordosis** 7°

#### BONE GRAFT WINDOW SIZING

Cage Size	Graft Window
18mm x 45mm:	11mm x 16mm
18mm x 50mm:	11mm x 18mm
18mm x 55mm:	11mm x 21mm
22mm x 45mm:	15mm x 16mm
22mm x 50mm:	15mm x 18mm
22mm x 55mm:	15mm x 21mm

CE0086

### Precision Spine, Inc.

2050 Executive Drive, Pearl, MS 39208  
 Customer Service: 1-888.241.4773 • Fax: 601.420.5501  
[www.precisionspineinc.com](http://www.precisionspineinc.com)

\* PEEK-OPTIMA polymer from Invibio®

Caution: Federal (USA) law restricts these devices to sale by or on the order of a physician.  
 ShurFit and Precision Spine are trademarks of Precision Spine, Inc.  
 4082 Copyright ©2014 Precision Spine, Inc. All rights reserved.



PRECISION  SPINE  
**SHURFIT™**  
MALIF™ CAGES



**Bulleted Leading Edge**



**Central Strut**



**Large Graft Windows**



***Easy Insertion***

The ShurFit™ MALIF™ Interbody Cage is a minimally invasive, self-distracting vertebral body replacement system featuring a complete line of disc prep instruments and multiple retraction options that allow for optimal access and unrestricted visibility. The PEEK-OPTIMA® interbody design provides five footprints with a 7° lordotic angle to assist in reproducing the patient's sagittal profile while providing anterior column support. The MALIF Cage incorporates an aggressive tooth pattern and central strut to provide an overall stable platform, while the large graft windows promote fusion.