

PRECISION SPINE  
**SLIMPLICITY<sup>®</sup> HP**  
 ANTERIOR CERVICAL PLATING SYSTEM

**SIMPLE AND VERSATILE**

The Slimplicity<sup>®</sup> HP ACP System offers simplified versatility to accommodate diverse patient anatomies and pathologies. Low profile constrained, semi-constrained, or hybrid constructs are achieved via fixed and variable angle screws.

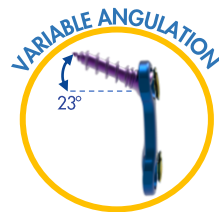
- **Dual thread screws** maximize cortical and cancellous bone interface
- **One-step locking mechanism** provides tactile and visual confirmation
- **Alignment Markings** and **Large Graft Windows** for increased intra-operative visualization and positioning

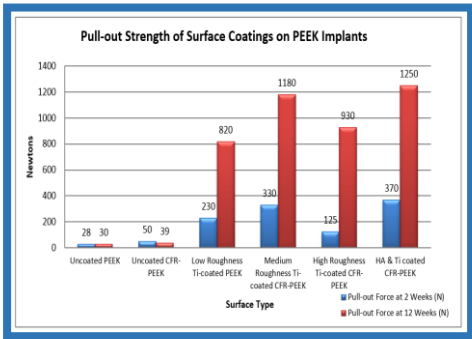
**PLATE SIZING**

- **Width** 16.5mm
- **Waist** 13mm
- **Thickness** 2mm
- **1 Level** 10-24mm (2mm)
- **2 Level** 24-44mm (2mm)
- **3 Level** 43-61mm (3mm)
- **4 Level** 60-80mm (4mm)

**BONE SCREWS**

- **Cortical/Cancellous Thread**
- **Dual Lead**
- **Fixed & Variable**
- **4 & 4.5mm Diameter**
- **12 – 16mm (2mm)**
- **T10 Hexalobe**





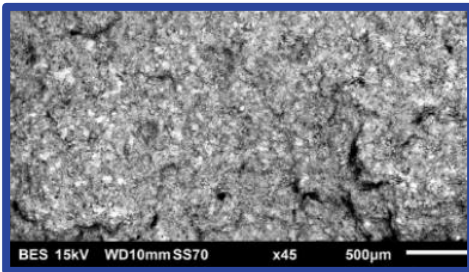
Best in Class Pull-Out Strength (N) Properties of HA + Ti Coating illustrated in head-to-head comparison of various coated PEEK surfaces<sup>(1)</sup>



PRECISION SPINE  
**SHURFIT<sup>®</sup> ACIF 2C**  
 HA-CPTI COATED INTERBODY CAGES

**OPTIMAL ENVIRONMENT FOR FUSION**

- **Ti Plasma Coated Surface** provides enhanced stability, improved imaging properties and increased migration resistance
- **Hydroxyapatite (HA) Coating** facilitates the formation of bone structure and may aid in more stable fixation
- **Increased expulsion resistance** compared to uncoated PEEK



Bone-mimicking roughness and bioactive HA layer (SEM image)

**SHURFIT ACIF 2C SIZING**

**Width x Length**

- 14 x 12mm; 16 x 14mm

**Lordosis**

- 5 and 10 degrees

**Height**

- 5 to 12mm (1mm increments)

