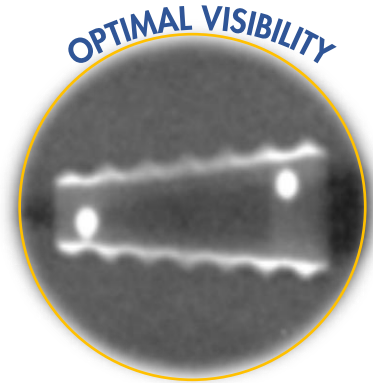
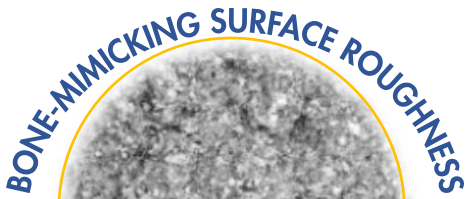
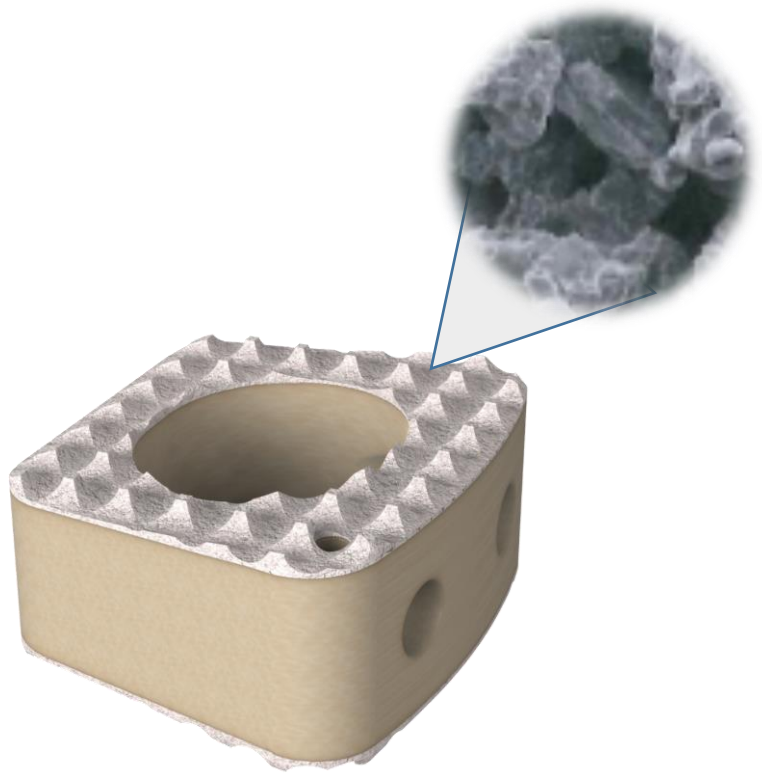


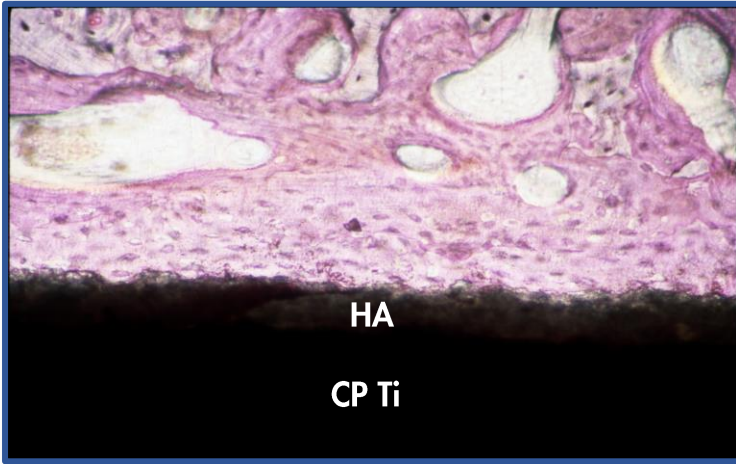
PRECISION SPINE
SHURFIT® ACIF
HA-CPTI COATED INTERBODY CAGES
2C

OPTIMAL ENVIRONMENT FOR FUSION

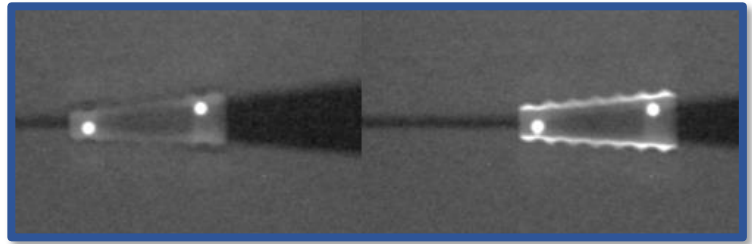
The ShurFit® ACIF 2C combines a high strength PEEK core with a unique, dual layer of coatings applied directly to the endplate surfaces. A biocompatible plasma-sprayed CP Titanium coating, with an outer layer of osteoconductive hydroxyapatite, provides an optimal environment for osseointegration. The dual coating promotes rapid bone formation, which offers implant stability and less potential for implant migration, leading to the formation of a stable fusion mass.



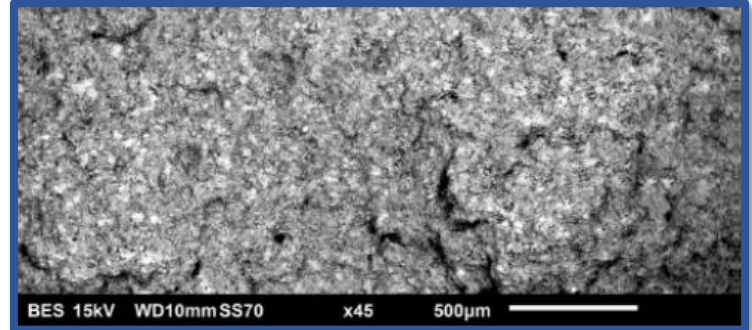
SHURFIT® ACIF 2C HA-CPTI COATED INTERBODY CAGES



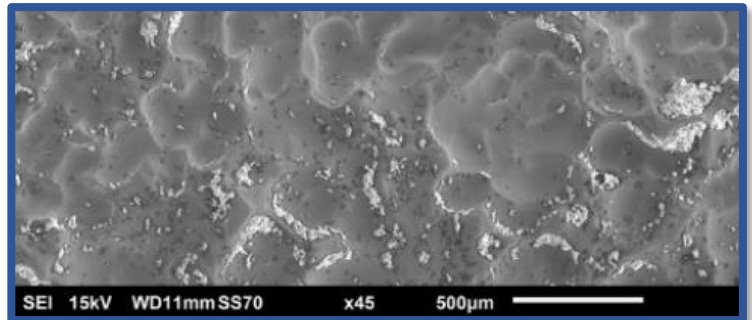
HA Coating on CP Titanium provides direct bony attachment to the implant surface (histologic image)



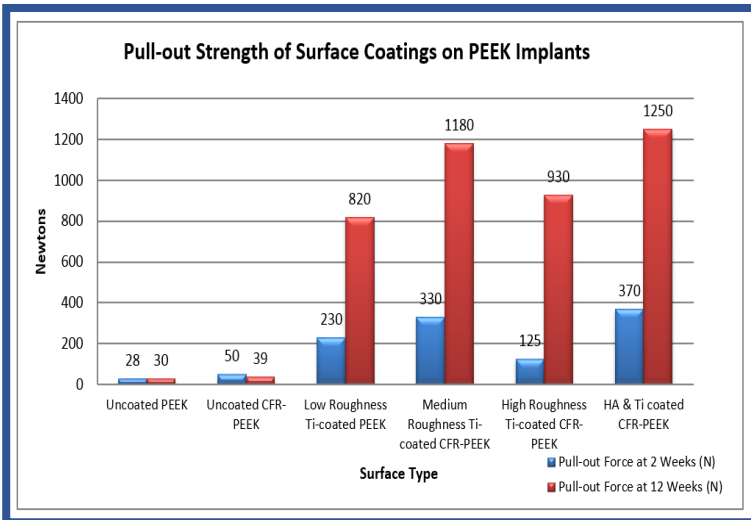
Improved visibility of endplates with 2C Coating demonstrated in polyurethane foam simulated bone (fluoroscopic image)



Bone-mimicking roughness and bioactive HA layer (SEM image)



Typical competitor's etched titanium surface does not feature the same bone-mimicking roughness of the ShurFit® ACIF 2C coated surface (SEM image)



Best in Class Pull-Out Strength (N) Properties of HA + Ti Coating illustrated in head-to-head comparison of various coated PEEK surfaces ⁽¹⁾

- Regardless of roughness variation, dual coating had the best strength

References:

(1) Stubinger, et al. J. Biomed Mater Res Part B. 2016; 104B:1182-91. Epub 2015 June 11.

SHURFIT ACIF 2C SIZING

Width x Length – 14 x 12mm; 16 x 14mm

Lordosis – 5 and 10 degrees

Height – 5 to 12mm (1mm increments)

Precision Spine, Inc.

2050 Executive Drive, Pearl, MS 39208
 Customer Service: 1.888.241.4773
 Phone: 601.420.4244
 Toll Free: 877.780.4370
 Fax: 601.420.5501
 www.precisionspineinc.com

